

[2022] ZI10227

**2021 12 31**

---

1-2

2021

12 31

1-15

[2022] ZI10227

“ 2021 12 31 ”

3101 —

2021 12 31

2021 12 31

•

**2021 4 25**

**2021 12 31**

“ ”  
“ ” “ ”

2021 12 31

100% 100%

1

0.5%

1

2

1

2

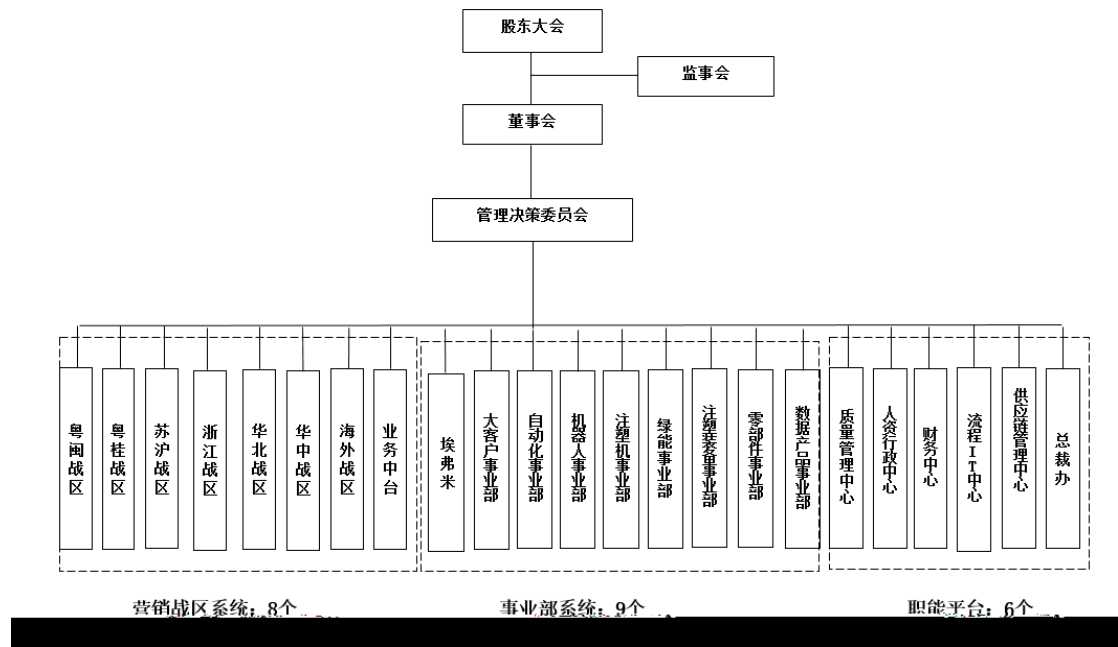
3

**2**

1%

0.5%

**1**





4

2021

1

“ ” “ 100  
100 ” “  
” “ ”  
” ” “ ”

2

2 —

8

2021

3

8

8



“ ” “ ”

“ ” “ ”

“ ”  
“ ”

2021

5

4

5

6S

GB/T 24001-2016/ISO

14001:2015

“ ”

6



7

1

50

2

/

3

ERP

4

5

6

7                    2021 12 31                    3,184.52

8

9

10

11

12

8

1

SAP

BPM

CRM

SRM

HR

2

3

9

( )

